

Unit 1 - St Tropez I to V

1 - 3455 Countryside Blvd, Clearwater, FL, Pinellas 33761

Unit Information

MLS Number:	TB8439167
Status:	ACTIVE
Size:	995 Sq ft.
Bedrooms:	3
Full Bathrooms:	2
Half Bathrooms:	0
Parking Spaces:	
View:	
List Price:	\$219,900
List PPSF:	\$221
Valuated Price:	\$187,000
Valuated PPSF:	\$188

The above valuated price is a baseline figure that does not take into account any specific renovation, upgrade, split, merge, or deterioration of the unit.

Building Information

Number of units:	108
Number of active listings for rent:	0
Number of active listings for sale:	6
Building inventory for sale:	5%
Number of sales over the last 12 months:	7
Number of sales over the last 6 months:	5
Number of sales over the last 3 months:	1

Building Association Information

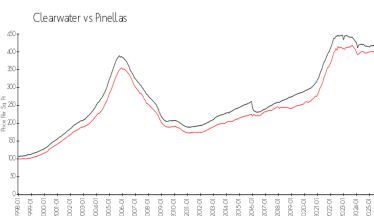
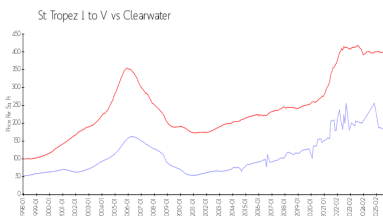
St. Tropez Condominium Association Inc
3455 Countryside Blvd Apt 105
Clearwater, Florida 33761
(727) 464-7991

<https://>

Recent Sales

Unit #	Size	Closing Date	Sale Price	PPSF
101	1,150 sq ft	Sep 2025	\$262,500	\$228
52	865 sq ft	Sep 2025	\$175,000	\$202
33	865 sq ft	Aug 2025	\$158,000	\$183
15	865 sq ft	Jul 2025	\$150,000	\$173
19	860 sq ft	Apr 2025	\$160,000	\$186

Market Information

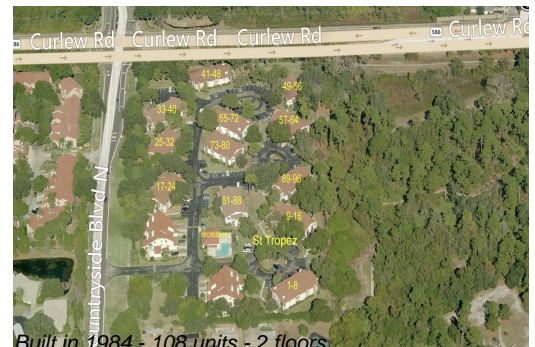


St Tropez I to V:	\$189/sq. ft.	Clearwater:	\$391/sq. ft.
Clearwater:	\$391/sq. ft.	Pinellas:	\$385/sq. ft.

Inventory for Sale

St Tropez I to V	6%
Clearwater	8%
Pinellas	8%

Avg. Time to Close Over Last 12 Months



St Tropez I to V	117 days
Clearwater	105 days
Pinellas	100 days