

Unit 218 - Meadow Lake

218 - 2690 Coral Landings Blvd, Palm Harbor, FL, Pinellas 34684

Unit Information

MLS Number: TB8440696
Status: ACTIVE
Size: 1,351 Sq ft.
Bedrooms: 3
Full Bathrooms: 2
Half Bathrooms: 0
Parking Spaces: Guest, Open, Reserved
View: Trees/Woods, Water
List Price: \$235,900
List PPSF: \$175
Valuated Price: \$243,000
Valuated PPSF: \$180

The above valuated price is a baseline figure that does not take into account any specific renovation, upgrade, split, merge, or deterioration of the unit.

Building Information

Number of units: 168
Number of active listings for rent: 0
Number of active listings for sale: 12
Building inventory for sale: 7%
Number of sales over the last 12 months: 5
Number of sales over the last 6 months: 4
Number of sales over the last 3 months: 0

Building Association Information

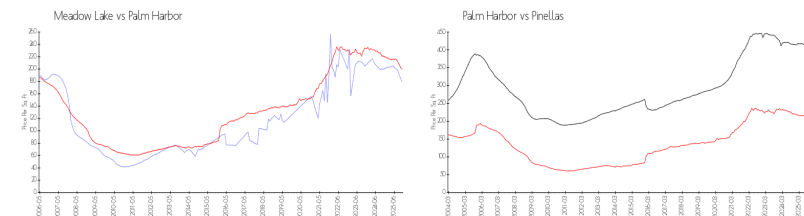
Meadow Lake Palm Harbor Condo
2690 Coral Landings Blvd,
Palm Harbor, FL 34684
(727) 773-2125

<https://>

Recent Sales

Unit #	Size	Closing Date	Sale Price	PPSF
	1,115 sq ft	Sep 2025	\$225,000	\$202
122	928 sq ft	Aug 2025	\$155,000	\$167
217	685 sq ft	Aug 2025	\$170,000	\$248
722	960 sq ft	Aug 2025	\$172,000	\$179
112	685 sq ft	May 2025	\$141,110	\$206

Market Information

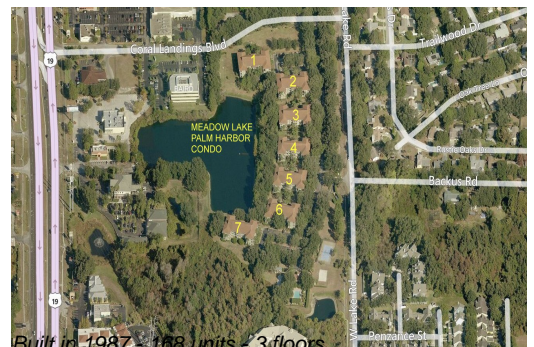


Meadow Lake:	\$179/sq. ft.	Palm Harbor:	\$200/sq. ft.
Palm Harbor:	\$200/sq. ft.	Pinellas:	\$385/sq. ft.

Inventory for Sale

Meadow Lake	7%
Palm Harbor	5%
Pinellas	8%

Avg. Time to Close Over Last 12 Months



Meadow Lake	156 days
Palm Harbor	106 days
Pinellas	100 days