

# Unit 2701 Countryside Blvd # 102 - Bryn Mawr at Countryside

2701 Countryside Blvd # 102 - 2701-2765 Countryside Blvd, Clearwater, FL, Pinellas 33761

## Unit Information

|                 |              |
|-----------------|--------------|
| MLS Number:     | TB8443685    |
| Status:         | ACTIVE       |
| Size:           | 1,005 Sq ft. |
| Bedrooms:       | 2            |
| Full Bathrooms: | 2            |
| Half Bathrooms: | 0            |
| Parking Spaces: |              |
| View:           |              |
| List Price:     | \$257,900    |
| List PPSF:      | \$257        |
| Valuated Price: | \$208,000    |
| Valuated PPSF:  | \$207        |

*The above valuated price is a baseline figure that does not take into account any specific renovation, upgrade, split, merge, or deterioration of the unit.*

## Building Information

|  |     |
|--|-----|
| Number of units:                         | 112 |
| Number of active listings for rent:      | 0   |
| Number of active listings for sale:      | 11  |
| Building inventory for sale:             | 9%  |
| Number of sales over the last 12 months: | 2   |
| Number of sales over the last 6 months:  | 1   |
| Number of sales over the last 3 months:  | 0   |

## Building Association Information

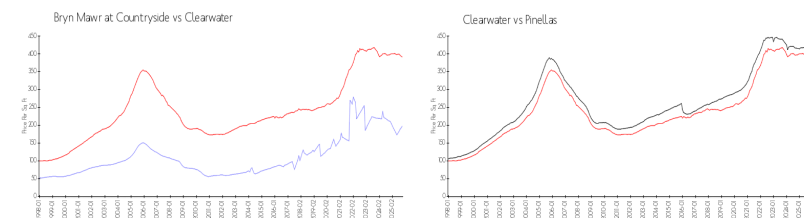
BRYN MAWR AT COUNTRYSIDE CONDOMINIUM ASSOCIATION, INC.  
 PROGRESSIVE MANAGEMENT, INC.  
 4151 WOODLANDS PKWY  
 PALM HARBOR FL 34685  
 727-773-9542

<https://>

## Recent Sales

| Unit # | Size        | Closing Date | Sale Price | PPSF  |
|--------|-------------|--------------|------------|-------|
| 107    | 830 sq ft   | Jun 2025     | \$150,000  | \$181 |
| 102    | 1,005 sq ft | Dec 2024     | \$220,000  | \$219 |

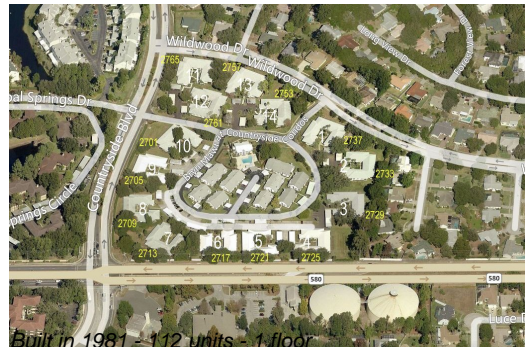
## Market Information



|                           |               |             |               |
|---------------------------|---------------|-------------|---------------|
| Bryn Mawr at Countryside: | \$198/sq. ft. | Clearwater: | \$391/sq. ft. |
| Clearwater:               | \$391/sq. ft. | Pinellas:   | \$385/sq. ft. |

## Inventory for Sale

|                          |     |
|--------------------------|-----|
| Bryn Mawr at Countryside | 10% |
| Clearwater               | 8%  |
| Pinellas                 | 8%  |



**Avg. Time to Close Over Last 12 Months**

|                          |          |
|--------------------------|----------|
| Bryn Mawr at Countryside | 11 days  |
| Clearwater               | 106 days |
| Pinellas                 | 100 days |