

Unit 1230 S Missouri Ave # 710 - Avalon at Clearwater (1222 to 1240)

1230 S Missouri Ave # 710 - 1222 S Missouri Ave, Clearwater, FL, Pinellas 33756

Unit Information

MLS Number: TB8448420
 Status: ACTIVE
 Size: 701 Sq ft.
 Bedrooms: 1
 Full Bathrooms: 1
 Half Bathrooms: 0
 Parking Spaces: Common, Guest, Off Street, Open
 View: Trees/Woods
 List Price: \$227,500
 List PPSF: \$325
 Valuated Price: \$207,000
 Valuated PPSF: \$295

The above valuated price is a baseline figure that does not take into account any specific renovation, upgrade, split, merge, or deterioration of the unit.

Building Information

Number of units: 200
 Number of active listings for rent: 0
 Number of active listings for sale: 7
 Building inventory for sale: 3%
 Number of sales over the last 12 months: 10
 Number of sales over the last 6 months: 7
 Number of sales over the last 3 months: 4

Building Association Information

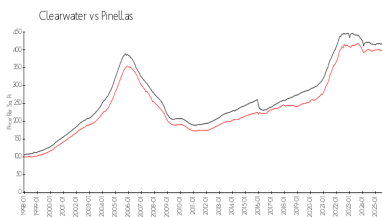
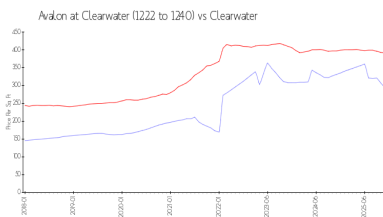
Avalon At Clearwater
 Address: 1220 S Missouri Ave,
 Clearwater, FL 33756

<https://>

Recent Sales

Unit #	Size	Closing Date	Sale Price	PPSF
108	1,096 sq ft	Dec 2025	\$282,228	\$258
1008	1,097 sq ft	Nov 2025	\$280,000	\$255
517	730 sq ft	Oct 2025	\$210,000	\$288
1013	1,097 sq ft	Sep 2025	\$315,000	\$287
707	730 sq ft	Sep 2025	\$210,000	\$288
415	485 sq ft	Sep 2025	\$186,000	\$384

Market Information

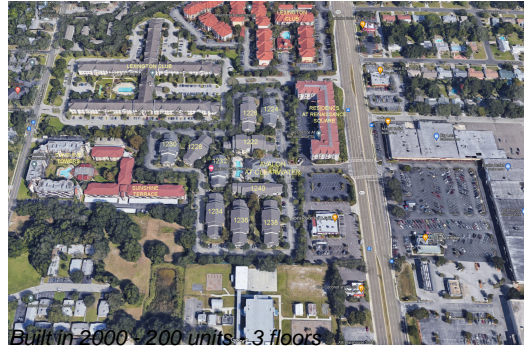


Avalon at Clearwater (1222 to 1240): \$294/sq. ft.
 Clearwater: \$391/sq. ft.

Clearwater: \$391/sq. ft.
 Pinellas: \$385/sq. ft.

Inventory for Sale

Avalon at Clearwater (1222 to 1240) 4%
 Clearwater 8%



Pinellas 8%

Avg. Time to Close Over Last 12 Months

Avalon at Clearwater (1222 to 1240)	85 days
Clearwater	106 days
Pinellas	100 days