

Unit 310 - Terrace Park of Five Towns 25 Princeton

310 - 6188 80 St N, St Petersburg, FL, Pinellas 33709

Unit Information

MLS Number:	TB8452211
Status:	ACTIVE
Size:	1,345 Sq ft.
Bedrooms:	2
Full Bathrooms:	2
Half Bathrooms:	0
Parking Spaces:	
View:	
List Price:	\$276,000
List PPSF:	\$205
Valuated Price:	\$242,000
Valuated PPSF:	\$180

The above valuated price is a baseline figure that does not take into account any specific renovation, upgrade, split, merge, or deterioration of the unit.

Building Information

Number of units:	44
Number of active listings for rent:	0
Number of active listings for sale:	2
Building inventory for sale:	4%
Number of sales over the last 12 months:	1
Number of sales over the last 6 months:	0
Number of sales over the last 3 months:	0

Building Association Information

Terrace Park of Five Towns
Address: 5975 Terrace Park Dr N, St. Petersburg, FL 33709
Phone: +1 727-544-4205

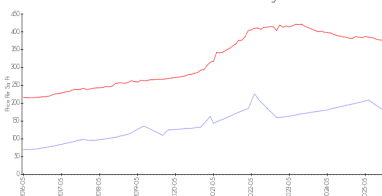
<https://fivetownstp.nabrnetwork.com/>

Recent Sales

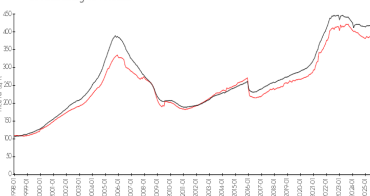
Unit #	Size	Closing Date	Sale Price	PPSF
402	1,345 sq ft	Jun 2025	\$285,000	\$212

Market Information

Terrace Park of Five Towns 25 Princeton vs St. Petersburg



St. Petersburg vs Pinellas



Terrace Park of Five Towns 25 Princeton: \$179/sq. ft.
St Petersburg: \$376/sq. ft.

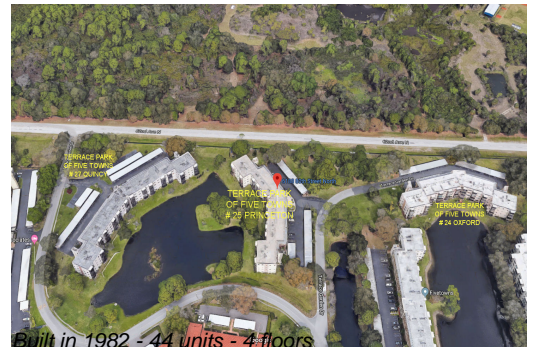
St Petersburg: \$376/sq. ft.
Pinellas: \$385/sq. ft.

Inventory for Sale

Terrace Park of Five Towns 25 Princeton	5%
St Petersburg	9%
Pinellas	8%

Avg. Time to Close Over Last 12 Months

Terrace Park of Five Towns 25 Princeton	66 days
St Petersburg	95 days



Pinellas

100 days