

# Unit 1723 Hampton Ln # 406 - Harbourtowne at Country Woods

1723 Hampton Ln # 406 - 1533-1755 Nantucket Ct, Palm Harbor, FL, Pinellas 34683

## Unit Information

MLS Number:	TB8455615
Status:	ACTIVE
Size:	925 Sq ft.
Bedrooms:	2
Full Bathrooms:	2
Half Bathrooms:	0
Parking Spaces:	Assigned, Guest
View:	Garden
List Price:	\$174,900
List PPSF:	\$189
Valuated Price:	\$166,000
Valuated PPSF:	\$179

*The above valuated price is a baseline figure that does not take into account any specific renovation, upgrade, split, merge, or deterioration of the unit.*

## Building Information

Number of units:	248
Number of active listings for rent:	0
Number of active listings for sale:	4
Building inventory for sale:	1%
Number of sales over the last 12 months:	1
Number of sales over the last 6 months:	0
Number of sales over the last 3 months:	0

## Building Association Information

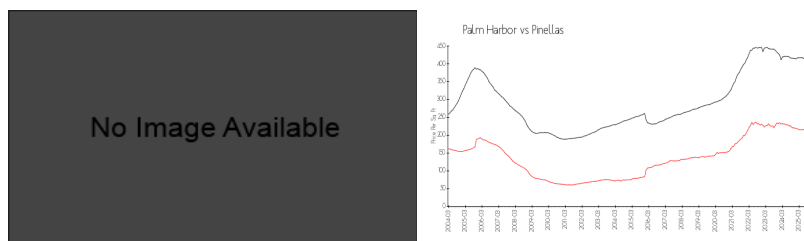
Harbourtowne at Country Woods  
Condo Assoc Inc.  
1697 Nantucket Ct  
Palm Harbor FL 34683  
717 701-0792

<https://htcondos.com/>

## Recent Sales

Unit #	Size	Closing Date	Sale Price	PPSF
1208	925 sq ft	Jun 2025	\$155,000	\$168

## Market Information

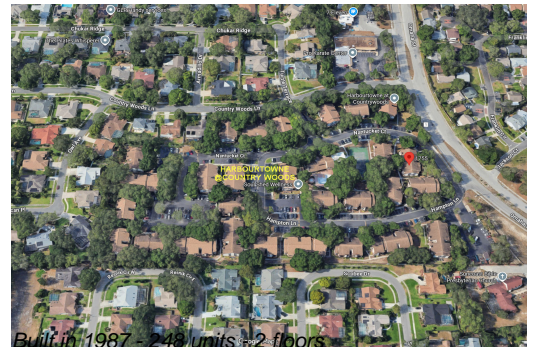


Harbourtowne at Country Woods:	\$181/sq. ft.	Palm Harbor:	\$200/sq. ft.
Palm Harbor:	\$200/sq. ft.	Pinellas:	\$385/sq. ft.

## Inventory for Sale

Harbourtowne at Country Woods	2%
Palm Harbor	5%
Pinellas	8%

## Avg. Time to Close Over Last 12 Months



Harbourtowne at Country Woods	74 days
Palm Harbor	106 days
Pinellas	100 days