

# Unit 1222 S Missouri Ave # 814 - Avalon at Clearwater (1222 to 1240)

1222 S Missouri Ave # 814 - 1222 S Missouri Ave, Clearwater, FL, Pinellas 33756

## Unit Information

MLS Number: U8219181  
 Status: ACTIVE  
 Size: 730 Sq ft.  
 Bedrooms: 1  
 Full Bathrooms: 1  
 Half Bathrooms: 0  
 Parking Spaces:  
 View:  
 List Price: \$229,000  
 List PPSF: \$314

## Building Information

Number of units: 200  
 Number of active listings for rent: 0  
 Number of active listings for sale: 1  
 Building inventory for sale: 0%  
 Number of sales over the last 12 months: 8  
 Number of sales over the last 6 months: 4  
 Number of sales over the last 3 months: 2

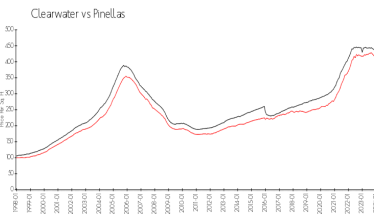
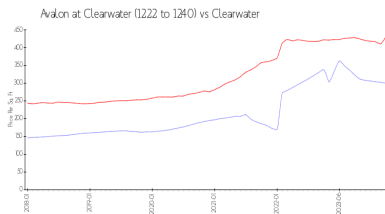
## Building Association Information

Avalon At Clearwater  
 Address: 1220 S Missouri Ave,  
 Clearwater, FL 33756

## Recent Sales

Unit #	Size	Closing Date	Sale Price	PPSF
905	730 sq ft	Apr 2024	\$224,000	\$307
515	730 sq ft	Mar 2024	\$214,000	\$293
214	1,096 sq ft	Dec 2023	\$318,000	\$290
903	730 sq ft	Nov 2023	\$240,000	\$329
803	730 sq ft	Oct 2023	\$225,000	\$308

## Market Information



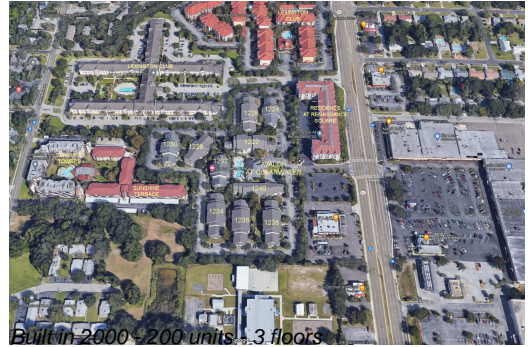
Avalon at Clearwater (1222 to 1240): \$300/sq. ft.  
 Clearwater: \$434/sq. ft.  
 Pinellas: \$415/sq. ft.

## Inventory for Sale

Avalon at Clearwater (1222 to 1240) 1%  
 Clearwater 4%  
 Pinellas 3%

## Avg. Time to Close Over Last 12 Months

Avalon at Clearwater (1222 to 1240) 63 days



Clearwater  
Pinellas

60 days  
60 days