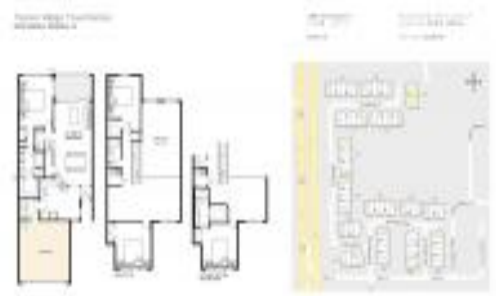


Unit 4887 Silverback Ct - Tarpon Ridge Townhomes

4887 Silverback Ct - 2509-4899 Silverback Ct, Palm Harbor, FL, Pinellas 34684

Unit Information

MLS Number: U8229392
 Status: ACTIVE
 Size: 2,215 Sq ft.
 Bedrooms: 3
 Full Bathrooms: 2
 Half Bathrooms: 1
 Parking Spaces: Garage Door Opener, Ground Level, Off Street
 View:
 List Price: \$479,900
 List PPSF: \$217



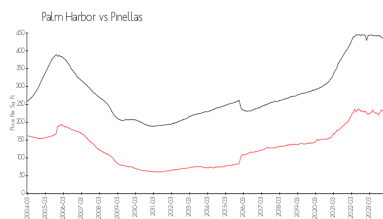
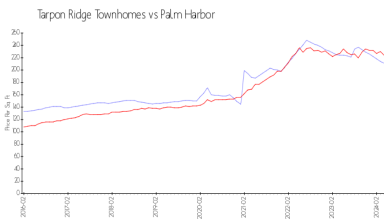
Building Information

Number of units: 80
 Number of active listings for rent: 0
 Number of active listings for sale: 3
 Building inventory for sale: 3%
 Number of sales over the last 12 months: 5
 Number of sales over the last 6 months: 2
 Number of sales over the last 3 months: 1

Recent Sales

Unit #	Size	Closing Date	Sale Price	PPSF
	2,250 sq ft	Mar 2024	\$485,000	\$216
	2,215 sq ft	Dec 2023	\$485,000	\$219
	2,600 sq ft	Aug 2023	\$575,000	\$221
	2,250 sq ft	Aug 2023	\$480,000	\$213
	2,215 sq ft	May 2023	\$483,500	\$218

Market Information



Tarpon Ridge Townhomes:	\$211/sq. ft.	Palm Harbor:	\$224/sq. ft.
Palm Harbor:	\$224/sq. ft.	Pinellas:	\$417/sq. ft.

Inventory for Sale

Tarpon Ridge Townhomes: 4%
 Palm Harbor: 2%
 Pinellas: 3%

Avg. Time to Close Over Last 12 Months

Tarpon Ridge Townhomes: 28 days
 Palm Harbor: 32 days
 Pinellas: 60 days