

Unit 217 - 1010 Central

217 - 1010 Central Ave, St Petersburg, FL, Pinellas 33705

Unit Information

MLS Number:	U8231583
Status:	ACTIVE
Size:	700 Sq ft.
Bedrooms:	1
Full Bathrooms:	1
Half Bathrooms:	0
Parking Spaces:	Assigned, Covered, Garage Door Opener, Guest, Off Street, Reserved
View:	City, Trees/Woods
List Price:	\$375,000
List PPSF:	\$536
Valuated Price:	\$344,000
Valuated PPSF:	\$491

The above valuated price is a baseline figure that does not take into account any specific renovation, upgrade, split, merge, or deterioration of the unit.

Building Information

Number of units:	114
Number of active listings for rent:	0
Number of active listings for sale:	4
Building inventory for sale:	3%
Number of sales over the last 12 months:	3
Number of sales over the last 6 months:	1
Number of sales over the last 3 months:	0

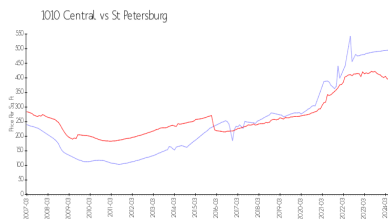
Building Association Information

1010 Central Condominium Association Inc
1010 Central Ave
Saint Petersburg, FL 33705-6650
(727) 821-4329

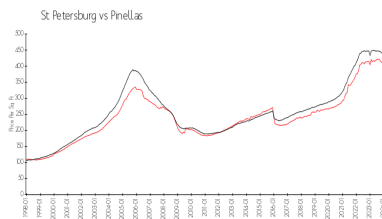
Recent Sales

Unit #	Size	Closing Date	Sale Price	PPSF
126	802 sq ft	Feb 2024	\$460,000	\$574
321	726 sq ft	Aug 2023	\$399,000	\$550
429	1,162 sq ft	Aug 2023	\$505,000	\$435

Market Information



1010 Central: \$495/sq. ft.
St Petersburg: \$397/sq. ft.

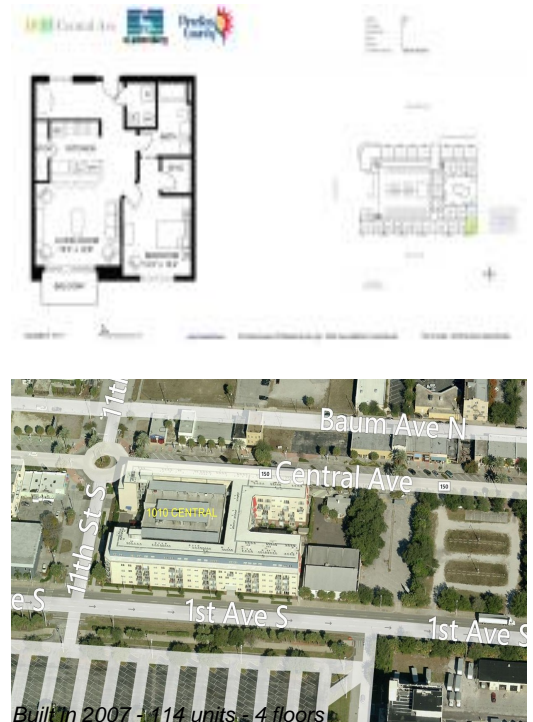


St Petersburg: \$397/sq. ft.
Pinellas: \$422/sq. ft.

Inventory for Sale

1010 Central	4%
St Petersburg	3%
Pinellas	3%

Avg. Time to Close Over Last 12 Months



1010 Central
St Petersburg
Pinellas

51 days
70 days
65 days