

Unit 124 - Victoria Palms

124 - 700 Lyndhurst St, Dunedin, FL, Pinellas 34698

Unit Information

| | |
|-----------------|-------------|
| MLS Number: | U8232833 |
| Status: | ACTIVE |
| Size: | 818 Sq ft. |
| Bedrooms: | 1 |
| Full Bathrooms: | 1 |
| Half Bathrooms: | 0 |
| Parking Spaces: | Open |
| View: | Trees/Woods |
| List Price: | \$254,999 |
| List PPSF: | \$312 |

Building Information

| | |
|--|----|
| Number of units: | 88 |
| Number of active listings for rent: | 0 |
| Number of active listings for sale: | 3 |
| Building inventory for sale: | 3% |
| Number of sales over the last 12 months: | 7 |
| Number of sales over the last 6 months: | 3 |
| Number of sales over the last 3 months: | 1 |

Building Association Information

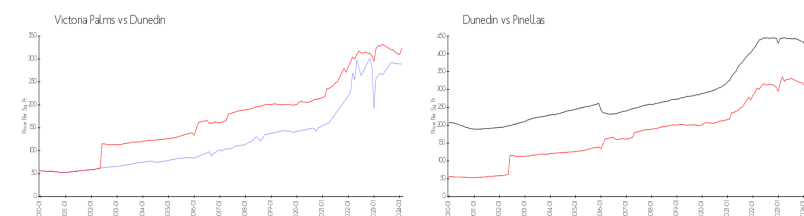
Victoria Palms of Dunedin
Condominium Association
Address: 700 Lyndhurst St,
Dunedin, FL 34698,
Phone: +1 727-734-0319

<http://victoriapalmshoa.com/>

Recent Sales

| Unit # | Size | Closing Date | Sale Price | PPSF |
|--------|-------------|--------------|------------|-------|
| 524 | 1,114 sq ft | Mar 2024 | \$289,900 | \$260 |
| 403 | 818 sq ft | Dec 2023 | \$225,000 | \$275 |
| 324 | 818 sq ft | Nov 2023 | \$240,000 | \$293 |
| 321 | 818 sq ft | Sep 2023 | \$242,000 | \$296 |
| 1021 | 1,114 sq ft | Jul 2023 | \$300,000 | \$269 |

Market Information

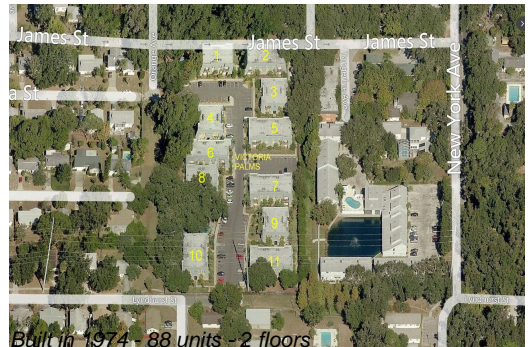


| | | | |
|-----------------|---------------|-----------|---------------|
| Victoria Palms: | \$289/sq. ft. | Dunedin: | \$323/sq. ft. |
| Dunedin: | \$323/sq. ft. | Pinellas: | \$417/sq. ft. |

Inventory for Sale

| | |
|----------------|----|
| Victoria Palms | 3% |
| Dunedin | 4% |
| Pinellas | 3% |

Avg. Time to Close Over Last 12 Months



| | |
|----------------|---------|
| Victoria Palms | 28 days |
| Dunedin | 68 days |
| Pinellas | 60 days |