

Unit 1408 - Isles Sand Key 1

1408 - 1621 Guld Blvd, Clearwater, FL, Pinellas 33767

Unit Information

MLS Number: U8233071
 Status: ACTIVE
 Size: 1,500 Sq ft.
 Bedrooms: 2
 Full Bathrooms: 2
 Half Bathrooms: 0
 Parking Spaces:
 View: Water
 List Price: \$835,000
 List PPSF: \$557

Building Information

Number of units: 124
 Number of active listings for rent: 0
 Number of active listings for sale: 4
 Building inventory for sale: 3%
 Number of sales over the last 12 months: 13
 Number of sales over the last 6 months: 6
 Number of sales over the last 3 months: 5

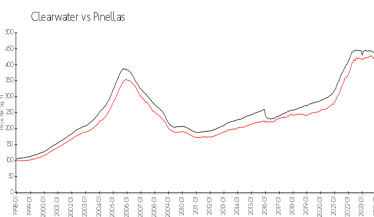
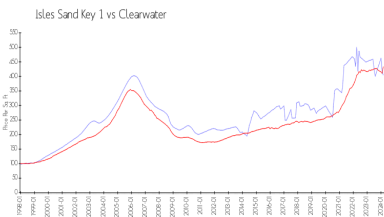
Building Association Information

ISLE OF SAND KEY PHASE 1 CONDOMINIUM ASSOCIATION
 1621 GULF BLVD
 CLEARWATER FL 33767-2974
 (727) 596-8242

Recent Sales

Unit #	Size	Closing Date	Sale Price	PPSF
1504	1,300 sq ft	Apr 2024	\$635,000	\$488
402	1,500 sq ft	Mar 2024	\$582,000	\$388
703	1,300 sq ft	Mar 2024	\$625,000	\$481
902	1,500 sq ft	Mar 2024	\$635,000	\$423
705	1,300 sq ft	Mar 2024	\$575,000	\$442

Market Information



Isles Sand Key 1: \$404/sq. ft.
 Clearwater: \$434/sq. ft.

Clearwater: \$434/sq. ft.
 Pinellas: \$415/sq. ft.

Inventory for Sale

Isles Sand Key 1: 3%
 Clearwater: 4%
 Pinellas: 3%

Avg. Time to Close Over Last 12 Months

Isles Sand Key 1: 77 days
 Clearwater: 60 days
 Pinellas: 60 days

