

# Unit 1226 S Missouri Ave # 1002 - Avalon at Clearwater (1222 to 1240)

1226 S Missouri Ave # 1002 - 1222 S Missouri Ave, Clearwater, FL, Pinellas 33756

## Unit Information

MLS Number:	U8240000
Status:	Leased
Size:	701 Sq ft.
Bedrooms:	1
Full Bathrooms:	1
Half Bathrooms:	0
Parking Spaces:	
View:	
List Price:	\$1,395
List PPSF:	\$2
Valuated Price:	\$227,000
Valuated PPSF:	\$324

*The above valuated price is a baseline figure that does not take into account any specific renovation, upgrade, split, merge, or deterioration of the unit.*

## Building Information

Number of units:	200
Number of active listings for rent:	0
Number of active listings for sale:	2
Building inventory for sale:	1%
Number of sales over the last 12 months:	7
Number of sales over the last 6 months:	3
Number of sales over the last 3 months:	0

## Building Association Information

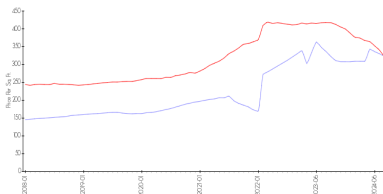
Avalon At Clearwater  
Address: 1220 S Missouri Ave,  
Clearwater, FL 33756

## Recent Sales

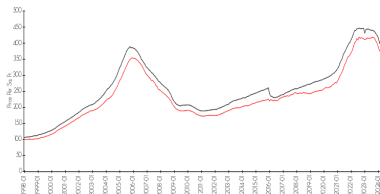
Unit #	Size	Closing Date	Sale Price	PPSF
908	701 sq ft	Jun 2024	\$254,000	\$362
507	730 sq ft	Jun 2024	\$227,000	\$311
905	730 sq ft	Apr 2024	\$224,000	\$307
515	730 sq ft	Mar 2024	\$214,000	\$293
214	1,096 sq ft	Dec 2023	\$318,000	\$290

## Market Information

Avalon at Clearwater (1222 to 1240) vs Clearwater



Clearwater vs Pinellas



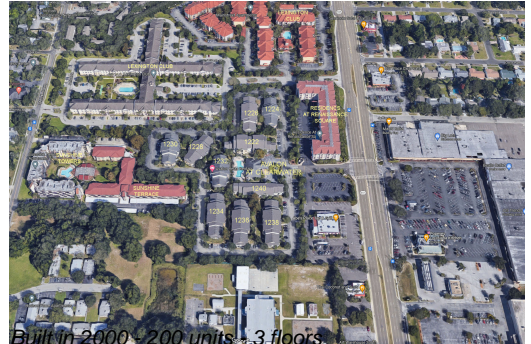
Avalon at Clearwater \$323/sq. ft.  
(1222 to 1240):  
Clearwater: \$321/sq. ft.

Clearwater: \$321/sq. ft.  
Pinellas: \$339/sq. ft.

## Inventory for Sale

Avalon at Clearwater (1222 to 1240)	1%
Clearwater	4%
Pinellas	4%

## Avg. Time to Close Over Last 12 Months



Avalon at Clearwater (1222 to 1240)	72 days
Clearwater	76 days
Pinellas	72 days