

# Unit 115 - Winston Park Northeast 500

115 - 4920 Locust St NE, St Petersburg, FL, Pinellas 33703

## Unit Information

MLS Number: U8242868  
 Status: ACTIVE  
 Size: 1,035 Sq ft.  
 Bedrooms: 2  
 Full Bathrooms: 2  
 Half Bathrooms: 0  
 Parking Spaces: Covered, Guest, Reserved  
 View:  
 List Price: \$260,000  
 List PPSF: \$251  
 Valuated Price: \$198,000  
 Valuated PPSF: \$191

*The above valuated price is a baseline figure that does not take into account any specific renovation, upgrade, split, merge, or deterioration of the unit.*

## Building Information

Number of units: 102  
 Number of active listings for rent: 0  
 Number of active listings for sale: 6  
 Building inventory for sale: 5%  
 Number of sales over the last 12 months: 7  
 Number of sales over the last 6 months: 4  
 Number of sales over the last 3 months: 2

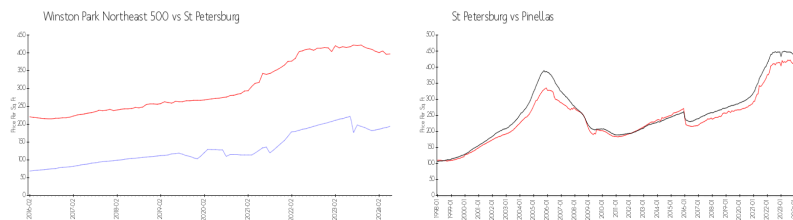
## Building Association Information

Winston Park Northeast  
 5085 1st St NE,  
 St. Petersburg, FL 33703  
 Phone: +1 727-528-7019

## Recent Sales

Unit #	Size	Closing Date	Sale Price	PPSF
327	1,035 sq ft	Jun 2024	\$155,000	\$150
310	1,035 sq ft	May 2024	\$259,900	\$251
128	930 sq ft	Jan 2024	\$140,000	\$151
333	1,035 sq ft	Dec 2023	\$190,000	\$184
303	1,035 sq ft	Oct 2023	\$279,800	\$270

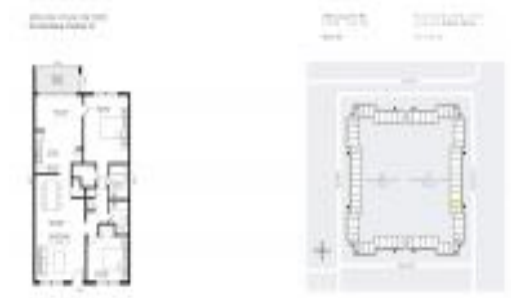
## Market Information



Winston Park Northeast 500:	\$194/sq. ft.	St Petersburg:	\$397/sq. ft.
St Petersburg:	\$397/sq. ft.	Pinellas:	\$422/sq. ft.

## Inventory for Sale

Winston Park Northeast 500: 6%  
 St Petersburg: 3%  
 Pinellas: 3%



**Avg. Time to Close Over Last 12 Months**

Winston Park Northeast 500	66 days
St Petersburg	70 days
Pinellas	66 days