

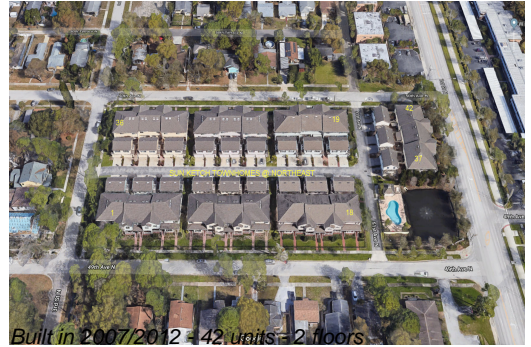
Unit 236 50th Ave N - Sun Ketch Townhomes at Northeast

236 50th Ave N - 120-242 50 Ave N, St Petersburg, FL, Pinellas 33703

Unit Information

MLS Number: U8245648
 Status: PENDING
 Size: 2,300 Sq ft.
 Bedrooms: 4
 Full Bathrooms: 3
 Half Bathrooms: 1
 Parking Spaces: Driveway, Garage Door Opener, Garage Faces Rear
 View:
 List Price: \$659,000
 List PPSF: \$287
 Valuated Price: \$624,000
 Valuated PPSF: \$271

The above valuated price is a baseline figure that does not take into account any specific renovation, upgrade, split, merge, or deterioration of the unit.



Building Information

Number of units: 42
 Number of active listings for rent: 0
 Number of active listings for sale: 1
 Building inventory for sale: 2%
 Number of sales over the last 12 months: 1
 Number of sales over the last 6 months: 1
 Number of sales over the last 3 months: 0

Building Association Information

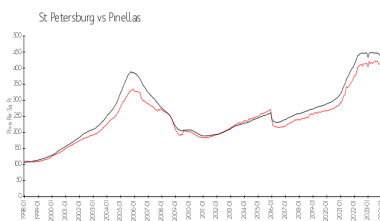
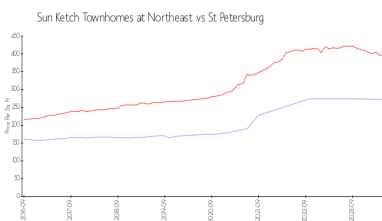
Sun Ketch Construction Inc
 Address: 2401 28th Ave N Suite A,
 St. Petersburg, Florida 33713
 Office: 727-592-0289
 Fax: 727-592-0299

<http://www.sunketch.com/communities/sk/NE.php>

Recent Sales

Unit #	Size	Closing Date	Sale Price	PPSF
	2,288 sq ft	Dec 2023	\$630,000	\$275

Market Information



Sun Ketch Townhomes at Northeast:	\$271/sq. ft.	St Petersburg:	\$397/sq. ft.
St Petersburg:	\$397/sq. ft.	Pinellas:	\$422/sq. ft.

Inventory for Sale

Sun Ketch Townhomes at Northeast	2%
St Petersburg	3%
Pinellas	3%

Avg. Time to Close Over Last 12 Months

Sun Ketch Townhomes at Northeast	76 days
St Petersburg	70 days
Pinellas	66 days