

# Unit 10033 64th Ave N # 16 - Long Bayou Condos (10032 to 10039 & 9950)

10033 64th Ave N # 16 - 10039 62 Ave N, St Petersburg, FL, Pinellas 33706

## Unit Information

MLS Number:	U8246904
Status:	Active
Size:	1,010 Sq ft.
Bedrooms:	2
Full Bathrooms:	2
Half Bathrooms:	0
Parking Spaces:	Assigned,Covered,Guest,Reserved
View:	
List Price:	\$175,000
List PPSF:	\$173
Valuated Price:	\$128,000
Valuated PPSF:	\$127

*The above valuated price is a baseline figure that does not take into account any specific renovation, upgrade, split, merge, or deterioration of the unit.*

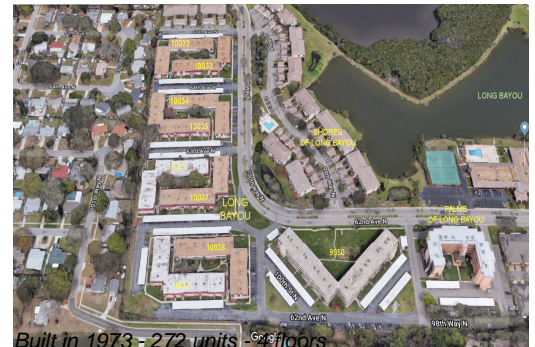
## Building Information

Number of units:	272
Number of active listings for rent:	0
Number of active listings for sale:	32
Building inventory for sale:	11%
Number of sales over the last 12 months:	6
Number of sales over the last 6 months:	5
Number of sales over the last 3 months:	2

## Building Association Information

Long Bayou Condominium Association  
9777 62nd Terrace N  
St Petersburg FL33708  
tel: 727 391 7414  
fax: 727 391 7484

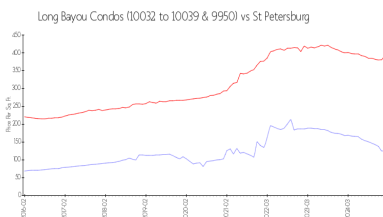
<http://www.longbayoucondos.com/>



## Recent Sales

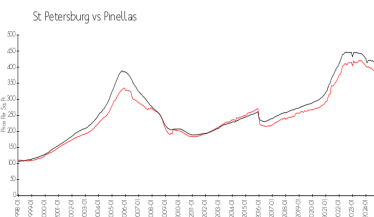
Unit #	Size	Closing Date	Sale Price	PPSF
108	790 sq ft	Mar 2025	\$85,000	\$108
18	1,010 sq ft	Feb 2025	\$122,500	\$121
217	790 sq ft	Jan 2025	\$99,000	\$125
17	1,010 sq ft	Dec 2024	\$140,000	\$139
24	1,010 sq ft	Nov 2024	\$145,000	\$144

## Market Information



Long Bayou Condos \$126/sq. ft.  
(10032 to 10039 & 9950):

St Petersburg: \$394/sq. ft.



St Petersburg: \$394/sq. ft.

Pinellas: \$404/sq. ft.

## Inventory for Sale

Long Bayou Condos (10032 to 10039 & 9950)	12%
St Petersburg	6%
Pinellas	6%

**Avg. Time to Close Over Last 12 Months**

Long Bayou Condos (10032 to 10039 & 9950)	258 days
St Petersburg	84 days
Pinellas	92 days