

# Unit 304 - Yacht & Tennis Club - Intrepid

304 - 9425 Blind Pass Rd, St Pete Beach, FL, Pinellas 33706

## Unit Information

MLS Number:	U8253752
Status:	Active
Size:	1,175 Sq ft.
Bedrooms:	2
Full Bathrooms:	2
Half Bathrooms:	0
Parking Spaces:	Guest
View:	Water
List Price:	\$495,000
List PPSF:	\$421
Valuated Price:	\$440,000
Valuated PPSF:	\$374

*The above valuated price is a baseline figure that does not take into account any specific renovation, upgrade, split, merge, or deterioration of the unit.*

## Building Information

Number of units:	93
Number of active listings for rent:	0
Number of active listings for sale:	12
Building inventory for sale:	12%
Number of sales over the last 12 months:	5
Number of sales over the last 6 months:	4
Number of sales over the last 3 months:	0

## Building Association Information

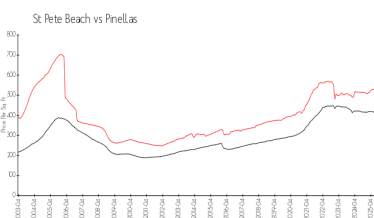
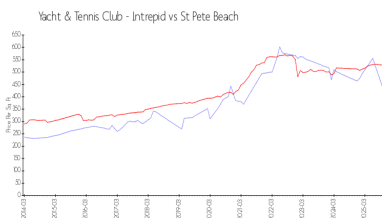
Yacht & Tennis Club Association Inc Address: 9415 Blind Pass Rd,  
St Pete Beach, FL 33706,  
Phone: +1 727-360-0379

<https://>

## Recent Sales

Unit #	Size	Closing Date	Sale Price	PPSF
1103	1,175 sq ft	Aug 2025	\$595,000	\$506
907	1,175 sq ft	Jul 2025	\$592,500	\$504
307	1,175 sq ft	Jun 2025	\$605,000	\$515

## Market Information



Yacht & Tennis Club \$403/sq. ft.  
- Intrepid:  
St Pete Beach: \$519/sq. ft.

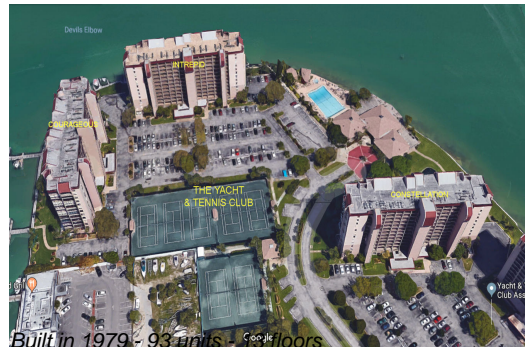
St Pete Beach: \$519/sq. ft.  
Pinellas: \$390/sq. ft.

## Inventory for Sale

Yacht & Tennis Club - Intrepid	13%
St Pete Beach	6%
Pinellas	7%

## Avg. Time to Close Over Last 12 Months

Yacht & Tennis Club - Intrepid	149 days
--------------------------------	----------



St Pete Beach  
Pinellas

96 days  
98 days