

# Unit D11 - Imperial Court

D11 - 1433 S Belcher Rd, Clearwater, FL, Pinellas 33764

## Unit Information

MLS Number: W7859760  
 Status: ACTIVE  
 Size: 855 Sq ft.  
 Bedrooms: 2  
 Full Bathrooms: 2  
 Half Bathrooms: 0  
 Parking Spaces: Assigned  
 View: Trees/Woods  
 List Price: \$137,900  
 List PPSF: \$161

## Building Information

Number of units: 120  
 Number of active listings for rent: 0  
 Number of active listings for sale: 10  
 Building inventory for sale: 8%  
 Number of sales over the last 12 months: 13  
 Number of sales over the last 6 months: 7  
 Number of sales over the last 3 months: 2

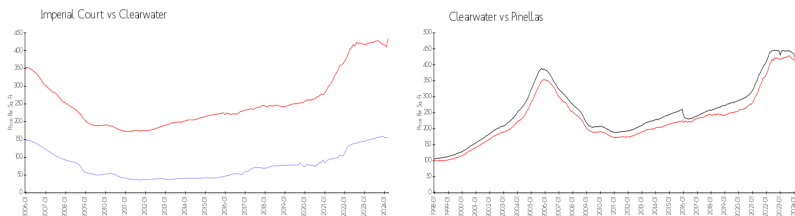
## Building Association Information

Imperial Court Condominium Apartments I Association Inc  
 1433 S Belcher Rd  
 Clearwater, Florida 33764-2893  
 FIRST CHOICE ASSOCIATION MANAGEMENT INC  
 727-785-8887

## Recent Sales

Unit #	Size	Closing Date	Sale Price	PPSF
C12	642 sq ft	Jan 2024	\$100,000	\$156
E6	642 sq ft	Jan 2024	\$105,500	\$164
G13	855 sq ft	Jan 2024	\$128,000	\$150
G11	1,032 sq ft	Jan 2024	\$135,000	\$131
6	642 sq ft	Dec 2023	\$99,000	\$154
G16	642 sq ft	Dec 2023	\$96,000	\$150
E8	855 sq ft	Dec 2023	\$147,000	\$172

## Market Information

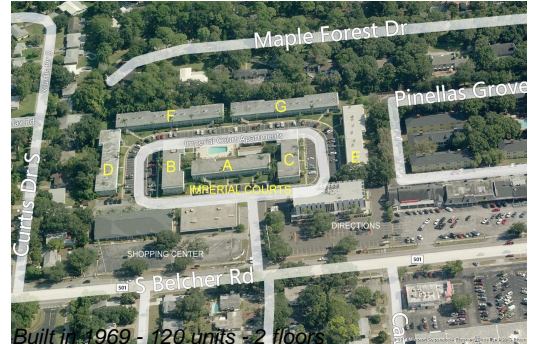


Imperial Court: \$155/sq. ft.  
 Clearwater: \$434/sq. ft.  
 Clearwater: \$434/sq. ft.  
 Pinellas: \$415/sq. ft.

## Inventory for Sale

Imperial Court 8%  
 Clearwater 4%  
 Pinellas 3%

## Avg. Time to Close Over Last 12 Months



Imperial Court  
Clearwater  
Pinellas

64 days  
60 days  
60 days