

Unit 908 Shoreline Cir - Summer House at Old Ponte Vedra 1

908 Shoreline Cir - 923-948 Seashell Ln, Ponte Vedra Beach, FL, St. Johns 32082

Unit Information

MLS Number: 2041566
 Status: Active
 Size: 1,033 Sq ft.
 Bedrooms: 2
 Full Bathrooms: 2
 Half Bathrooms: 0
 Parking Spaces: Parking Lot
 View: Pond
 List Price: \$320,000
 List PPSF: \$310
 Valuated Price: \$303,000
 Valuated PPSF: \$293

The above valuated price is a baseline figure that does not take into account any specific renovation, upgrade, split, merge, or deterioration of the unit.

Building Information

Number of units: 246
 Number of active listings for rent: 0
 Number of active listings for sale: 4
 Building inventory for sale: 1%
 Number of sales over the last 12 months: 1
 Number of sales over the last 6 months: 1
 Number of sales over the last 3 months: 0

Building Association Information

Summer House at Old Ponte Vedra
 Management Office
 Phone: 904 285-4200
 Fax: 904-273-2552

<http://summerhouse.yolasite.com/>

Recent Sales

Unit #	Size	Closing Date	Sale Price	PPSF
	734 sq ft	Jul 2024	\$235,000	\$320

Market Information

No Image Available	No Image Available
--------------------	--------------------

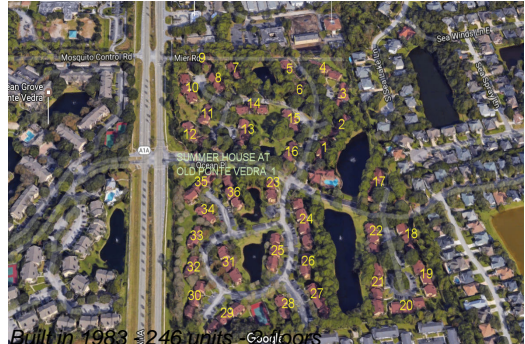
Summer House at Old Ponte Vedra 1: \$293/sq. ft.
 Ponte Vedra Beach: \$346/sq. ft.
 St. Johns: \$331/sq. ft.
 Ponte Vedra Beach: \$346/sq. ft.
 Ponte Vedra Beach: \$346/sq. ft.

Inventory for Sale

Summer House at Old Ponte Vedra 1: 2%
 Ponte Vedra Beach: 1%
 St. Johns: 2%

Avg. Time to Close Over Last 12 Months

Summer House at Old Ponte Vedra 1: 85 days



Ponte Vedra Beach
St. Johns

60 days
66 days