

Unit 862 Shoreline Cir - Summer House at Old Ponte Vedra 1

862 Shoreline Cir - 923-948 Seashell Ln, Ponte Vedra Beach, FL, St. Johns 32082

Unit Information

MLS Number: 2041830
 Status: Active
 Size: 890 Sq ft.
 Bedrooms: 2
 Full Bathrooms: 1
 Half Bathrooms: 0
 Parking Spaces: Unassigned
 View: Pond
 List Price: \$261,000
 List PPSF: \$293
 Valuated Price: \$261,000
 Valuated PPSF: \$293

The above valuated price is a baseline figure that does not take into account any specific renovation, upgrade, split, merge, or deterioration of the unit.

Building Information

Number of units: 246
 Number of active listings for rent: 0
 Number of active listings for sale: 4
 Building inventory for sale: 1%
 Number of sales over the last 12 months: 1
 Number of sales over the last 6 months: 1
 Number of sales over the last 3 months: 0

Building Association Information

Summer House at Old Ponte Vedra
 Management Office
 Phone: 904 285-4200
 Fax: 904-273-2552

<http://summerhouse.yolasite.com/>

Recent Sales

Unit #	Size	Closing Date	Sale Price	PPSF
	734 sq ft	Jul 2024	\$235,000	\$320

Market Information

No Image Available	No Image Available
--------------------	--------------------

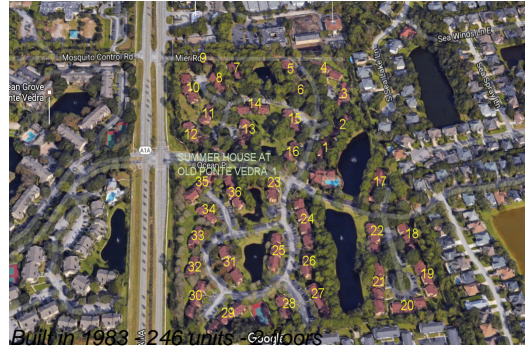
Summer House at Old Ponte Vedra 1:	\$293/sq. ft.	Ponte Vedra Beach:	\$346/sq. ft.
Ponte Vedra Beach:	\$346/sq. ft.	St. Johns:	\$331/sq. ft.

Inventory for Sale

Summer House at Old Ponte Vedra 1	2%
Ponte Vedra Beach	1%
St. Johns	2%

Avg. Time to Close Over Last 12 Months

Summer House at Old Ponte Vedra 1	85 days
-----------------------------------	---------



Ponte Vedra Beach
St. Johns

60 days
66 days