

Unit 833 Shoreline Cir - Summer House at Old Ponte Vedra 1

833 Shoreline Cir - 923-948 Seashell Ln, Ponte Vedra Beach, FL, St. Johns 32082

Unit Information

MLS Number:	2090073
Status:	Active
Size:	890 Sq ft.
Bedrooms:	2
Full Bathrooms:	1
Half Bathrooms:	0
Parking Spaces:	Assigned
View:	
List Price:	\$220,000
List PPSF:	\$247
Valuated Price:	\$218,000
Valuated PPSF:	\$245

The above valuated price is a baseline figure that does not take into account any specific renovation, upgrade, split, merge, or deterioration of the unit.

Building Information

Number of units:	246
Number of active listings for rent:	0
Number of active listings for sale:	9
Building inventory for sale:	3%
Number of sales over the last 12 months:	10
Number of sales over the last 6 months:	5
Number of sales over the last 3 months:	2

Building Association Information

Summer House at Old Ponte Vedra
Management Office
Phone: 904 285-4200
Fax: 904-273-2552

<https://summerhouse.yolasite.com/>

Recent Sales

Unit #	Size	Closing Date	Sale Price	PPSF
	1,215 sq ft	Dec 2025	\$330,000	\$272
	1,033 sq ft	Oct 2025	\$235,000	\$227
	1,215 sq ft	Aug 2025	\$300,000	\$247
	1,113 sq ft	Aug 2025	\$282,500	\$254
	1,113 sq ft	Jun 2025	\$300,000	\$270
	1,215 sq ft	Jun 2025	\$333,500	\$274

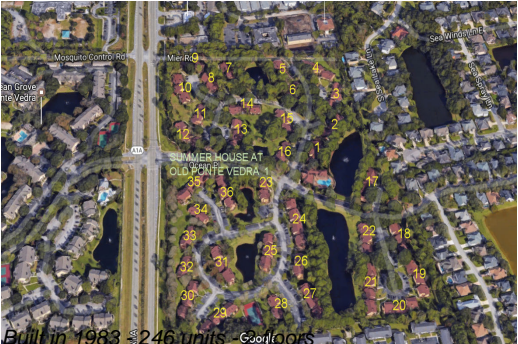
Market Information

No Image Available	No Image Available
--------------------	--------------------

Summer House at Old Ponte Vedra 1:	\$245/sq. ft.	Ponte Vedra Beach:	\$410/sq. ft.
Ponte Vedra Beach:	\$410/sq. ft.	St. Johns:	\$302/sq. ft.

Inventory for Sale

Summer House at Old Ponte Vedra 1	4%
-----------------------------------	----



Ponte Vedra Beach	2%
St. Johns	2%

Avg. Time to Close Over Last 12 Months

Summer House at Old Ponte Vedra 1	79 days
Ponte Vedra Beach	78 days
St. Johns	90 days